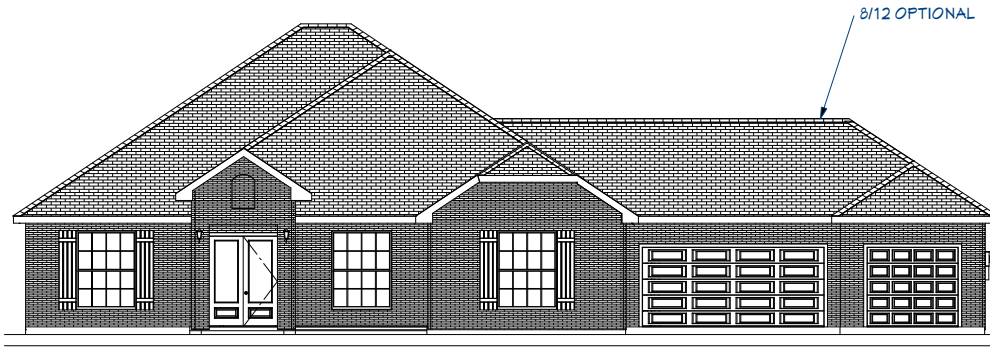




The JAXON A FRONT ENTRY

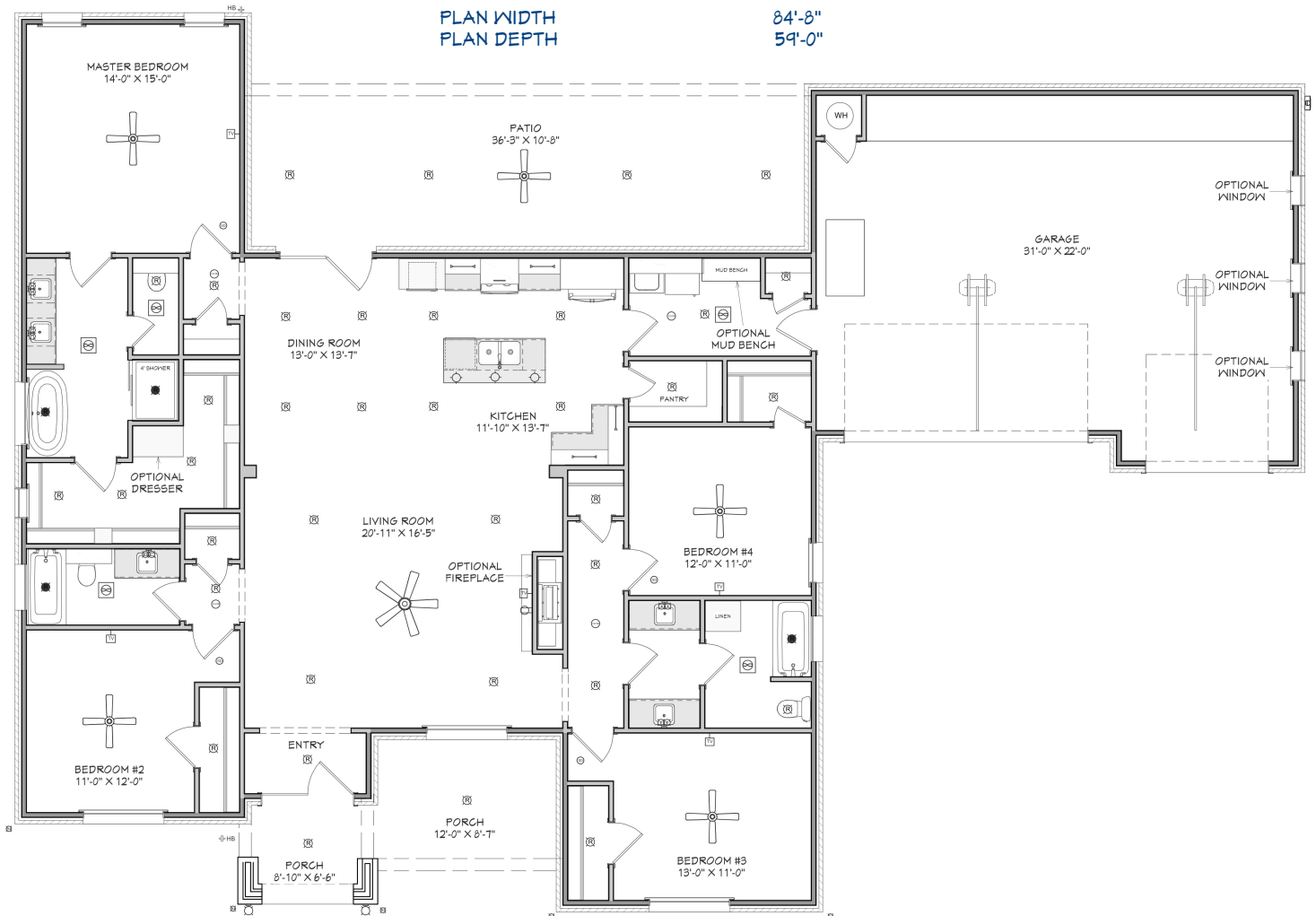
+/- 2267 sq. ft.



"Through Wisdom a House is Built, and by Understanding it is Established." Proverbs 24:3

SQUARE FOOTAGE LEGEND

MAIN FLOOR	2267 SQ. FT.
PORCH/ PATIO	547 SQ. FT.
GARAGE	702 SQ. FT.
TOTAL UNDER ROOF	3516 SQ. FT.
PLAN WIDTH	84'-8"
PLAN DEPTH	59'-0"



Robbie Christie - Builder (806) 681-8198

nandbhomes.com



(Prices, room sizes and sq. ft. may vary and are subject to change.)

Use of floor plans, elevations and renderings are designer's concepts and are the property of N & B Homes, Inc. Use of floor plans, elevations, and or renderings in part or in whole is a violation of federal copyright laws and will be prosecuted to the fullest extent of the law.